

Welcome to Soetmelksvlei

Soetmelksvlei is an interactive farm experience set in the late 19th century. Step back in time to an era before rampant industrialisation, when the world moved at a slower pace and people used their hands to create what was needed.

OLD STABLES RESTAURANT

The restaurant serves home-baked teatime treats and hearty farm-style lunches, with dishes that are typical of the Boland.

KIDS' OUTDOOR PLAY AREA

The restaurant's outdoor seating area has an unobstructed view of the play area with its shallow water canals, sand pits, a haystack clamber area and wooden cows for "milking".

ANIMAL ACTIVITIES

Animals are an integral part of the Soetmelksvlei family. The Kraal is home to cows, Chianina oxen, miniature donkeys, Percheron horses and Blackhead Persian sheep.

JONKERSHUIS FARM SHOP

Like a general store of old, the Farm Shop sells delicious homemade treats and handcrafted keepsakes by local artisans, as well as umbrellas and sunscreen.

MEAT ROOM

Meat and poultry preparation workshops are held in this state-of-the-art contemporary kitchen. Note the old-fashioned cooler adjacent to the Meat Room, where charcoal and water are used to keep perishables cool.

CREAMERY

A state-of-the-art kitchen where the farmyard's core produce is utilised in baking workshops. All workshops are booked in advance on the Babylonstoren website.

GARDENER'S COTTAGE

Surrounded by the kitchen garden, the cottage reflects the gardener's vast knowledge of healing herbs and traditional plants. Earthy aromatics, heirloom seed collections and the serenity of unadorned surfaces speak of a life lived in harmony with nature.

FOWL HOUSE

Our Naked Neck chickens (kaalnekhoenders in Afrikaans) live in this beautifully gabled home. The farmyard is also home to other chicken breeds, Pekin ducks and turkeys.

FARMHOUSE

Immerse yourself in 19th century living in our meticulously refurbished Farmhouse. Era-appropriate antiques blend seamlessly with items recreated in the style of the period. Kitchen activities are unscheduled and ongoing, displaying the specific utensils and techniques of the 19th century cook. This is a no-shoe zone; please use the socks provided.

OLD CELLAR & DISTILLERY

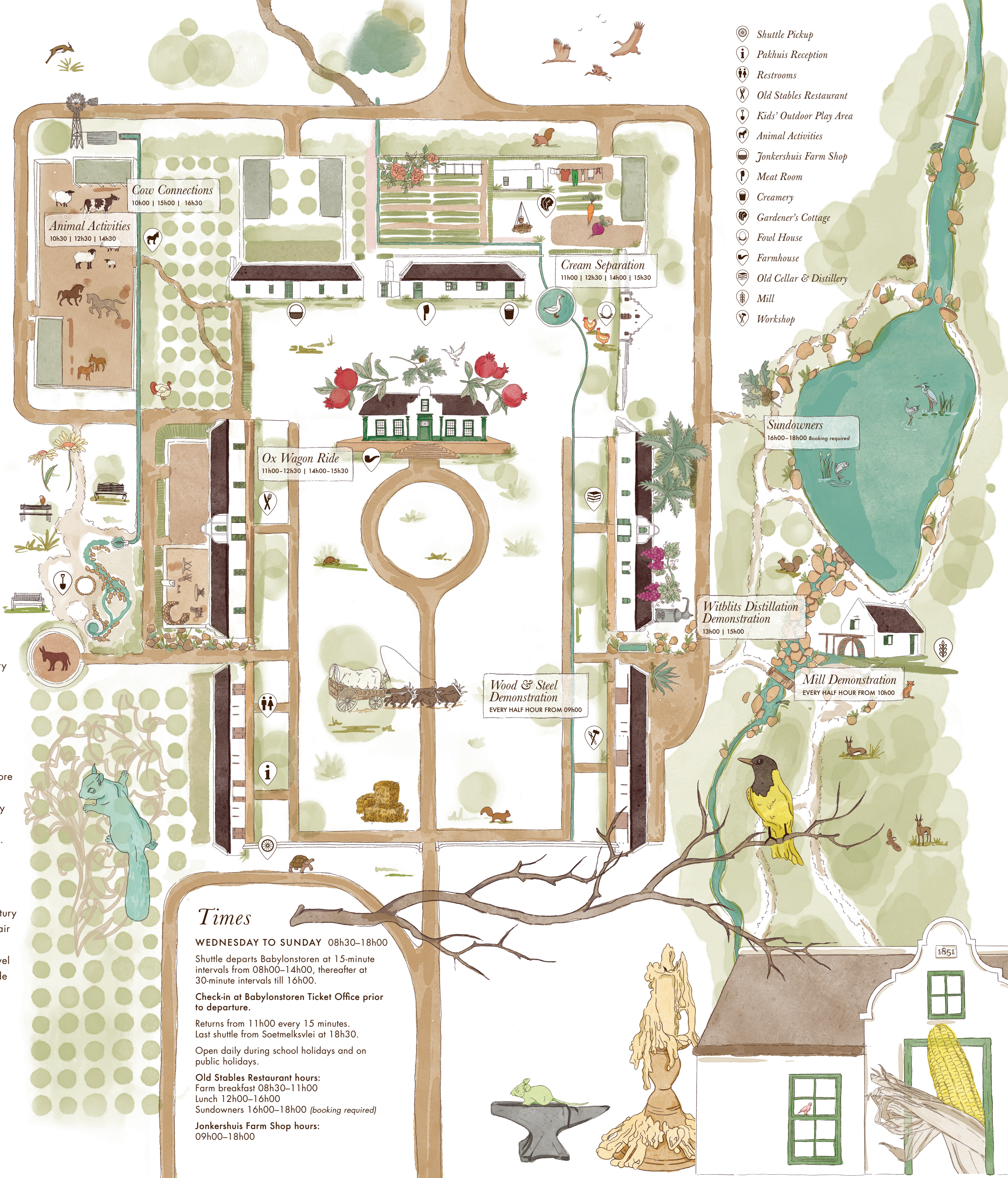
A wonder room in the true 19th century sense of the word: part exhibition space, part playhouse and part reading room. It celebrates the era's fascination with cultural and natural history collections. A library desk with charging stations can be used for research or leisure. Children can explore the delightful interior of the life-size Cape Dutch playhouse. At the Distillery behind the Old Cellar, distillers craft traditional mampoer in the copper still.

WORKSHOP

A blacksmith, carpenters and leather workers ply their trade using 19th century tools and techniques to make and repair farm implements and utensils for the home. Observe, ask questions or marvel at the magnificent display of handmade antique and contemporary tools.

MILL

An exact replica of a 19th century watermill where wheat is milled daily. Buy a flour token and bag from the Jonkershuis Farm Shop to collect fresh flour from the mill.



Times

WEDNESDAY TO SUNDAY 08h30-18h00

Shuttle departs Babylonstoren at 15-minute intervals from 08h00-14h00, thereafter at 30-minute intervals till 16h00.

Check-in at Babylonstoren Ticket Office prior to departure.

Returns from 11h00 every 15 minutes. Last shuttle from Soetmelksvlei at 18h30.

Open daily during school holidays and on public holidays.

Old Stables Restaurant hours:
Farm breakfast 08h30-11h00
Lunch 12h00-16h00
Sundowners 16h00-18h00 (booking required)

Jonkershuis Farm Shop hours:
09h00-18h00